



Fall Female Sale

NOVEMBER 19-20, 2022

HARTNEY, MANITOBA





Box 307, Hartney, MB RoM oXo

Gerry & Linda

Gerry • 204-741-0340

glbertholet@hotmail.com

Tanner • 204-741-0653

www.MapleLakeStockFarms.com



Find us on Facebook!

WATCH AND BID ONLINE

Internet Bidding Available

DLMS
www.dlms.ca

For more information call DLMS:
Mark Shologan 780.699.5082 or
DLMS Purebred Team 780.991.3025

Welcome From

MAPLE LAKE STOCK FARMS...

We continue to offer our quality genetics. These purebred female families are all doing a great job in our herd. We have no doubt they will add to your programs, be it purebred or commercial. **The Purebreds are in the Racehorse style finish DLMS Sale.** The purebred cows offered are good genetics that we have many female progeny working in our herd. No grain ration has been fed to these bred females. Proven Cows are preferred by some buyers.

80 Commercial bred females are on offer at our Open House November 19-20 on the farm, by Private treaty - first come - first serve. Prices marked on pens. There will also be approximately 20 commercial cows offered, 3-8 yrs. age. For those who prefer a proven cow to a heifer.

Videos of Purebreds & commercials will be posted online closer to sale

mark your calendars for the
KICK OFF TO SPRING BULL SALE
at Maple Lake Stock Farms March 8th, 2023



HOW TO PARTICIPATE IN THE DLMS FARM GATE TIMED AUCTION WITH EXTENDED BIDDING:

Technical Support: Mark Shologan 780-699-5082 markshologan@gmail.com

1. Visit <https://farmgatetimedauctions.ca>, click the LOGIN/REGISTRATION button. First time users will select the REGISTER button from this page. Fill out the registration form to sign up for a free user account and it allows you to select a username and password for use on all Farm Gate Timed auctions. This program will send you text and email messages whenever there is activity on your favorite lots or someone challenges your proxy bid and this is why you will be asked for both your current email and cell phone number. If you are a past participant in the the Farm Gate Timed auctions, simply enter your user name and password to continue. This takes you to a list of both current and upcoming Farm Gate Auctions.



Timed Auctions Made Easy

2. You can choose your favourite lots in this sale at this time and the program will allow you to open either all sale lots or just your favorite lots on your screen. Any time there is active bidding on a lot you have identified on your favorite list you will get a text and/or an email noting this activity.

3. The program allows you to place a proxy bid on any sale lot. This in fact protects your interest in any lot of interest for you to a specified dollar value you set, when you may not be able to give 100% attention to the sale. If the lot has a \$2000 bid on it, and you place a proxy bid of \$3500 into the system, the computer will bid \$2100 for you, but if some one else bids \$2200, the computer will again bid for you, this time at \$2300. The system will look after your interest to a maximum of \$3500. If another bidder is on at \$3600, your proxy will no longer have the winning bid on this lot without once again logging in and bidding again, or moving your attention to a second lot of interest.

4. At closing time of the sale, the entire sale will extend bidding for 5 minutes, if a bid is placed on any lot in the sale. Any bid received after close time will extend the sale by 5 minutes from the time of that bid. When no bidding occurs for 5 minutes, the computer will declare the sale finished.

5. Within 24 hours of the sale close, the Sale Manager will contact all winning bidders to arrange payment, transfer of pedigrees and delivery/pick up of your

WHAT IS A RACEHORSE STYLE CLOSE?

Racehorse style sale close is when the entire sale stays open in extended bidding. This type of sale allows you as the bidder to change to a different lot within the same sale the bidding has gone in to extended bidding.

HOW EXTENDED BIDDING WORKS

When we get to the close out end time, the clock for close extends with any bid placed with less than 5 minutes on the clock. This type of extended bidding turns the end time to more of a soft time. Extended bidding allows bidders to compete in lots like a real auction and gives all bidders the same time to make a decision. Always follow the clock to see how much time remains in the sale you are interested in.

Strong red performance with IPU Roughrider on the dam side and NUG Royal Red 324A. Very deep bodied, and is setting up a nice square udder.

Bred to Wheatland Next Century LER 43H on April 4/22



NUG ROYAL RED 324A | SIRE



1

MAPLE LAKE ROYAL RED 0231

August 23, 2020 • Polled • 1338130

LFE BLACK LAKOTA 385W
→ NUG ROYAL RED 324A
 TRIPLE C SMARTY PANTS R

IPU ROUGHRIDER 2T
→ MAPLE LAKE ROBIN 4231
 MFI MISS ROBIN GER 6231

R PLUS BLACKEDGE
 KJLI RAZZLE DAZZLE 628R
 TRIPLE C EL PODEROSO REY
 GFI GRAMMS DELIGHT L17
 WHEATLAND RED TEDDY 457P
 IPU RED POCAHONTAS 52N
 RED CROWFOOT OLE'S OSCAR
 MFI MISS ROBIN GER 3060

CE: 7.5
 BW: 3.3
 WW: 69.8
 YW: 103.5
 MILK: 24.1
 MCE: 2.1
 MWWT: 59.0

BW 79 lbs.
WW 795 lbs.

2

MAPLE LAKE RED 0451

September 26, 2020 • ML 0451H • Polled • 1338279

LFE BLACK LAKOTA 385W
→ NUG ROYAL RED 324A
 TRIPLE C SMARTY PANTS R

WHEATLAND BULL 786T
→ MAPLE LAKE REBOMB 4851
 MAPLE LAKE MS RENO 8051

R PLUS BLACKEDGE
 KJLI RAZZLE DAZZLE 628R
 TRIPLE C EL PODEROSO REY
 GFI GRAMMS DELIGHT L17
 WHEATLAND BULL 131L
 WHEATLAND LADY 351N
 DLH RENO 8R
 H HEREFORD/H HEREFORD

CE: 10.1
 BW: 2.5
 WW: 71.6
 YW: 102.2
 MILK: 19.4
 MCE: 5.4
 MWWT: 55.2

BW 86 lbs.
WW 734 lbs.



NEXT CENTURY LER 43H | SERVICE SIRE

Dam of this heifer is another strong LER 786T daughter MAPLE LAKE REBOMB 4851. Very dark red with extra length and depth. Strong maternal genetics. The breeding will be an exciting calf.

Bred to Wheatland next century LER 43H on March 24/22



2



She is sired by our calving ease Transformer 5961. Her dam is a Circuit Breaker cow with lots of milk. Maternal sister is Lot 22

Bred to Lieutenant IPU 24E on April 7/22

3

MAPLE LAKE TRANSFORMER 0597

December 28, 2020 • ML 0597H • Polled • 1378059

- WHEATLAND HIGHVOLTAGE122Y
- **MAPLE LAKE TRANSFORMER**
- ACS MS WILLAMENA 9761W
- WHEATLAND PREDATOR 922W
- WHEATLAND LADY 736 T
- REMINGTON ON TARGET 2S
- HAAS RANCH G217
- WHEATLAND HIGHVOLTAGE122Y
- WHEATLAND LADY 81X
- ERIXON TOP SHELF 77Y
- OAKVIEW MISS WHISPER 98W

CE:	11.4
BW:	0.8
WW:	61.8
YW:	87.3
MILK:	24.7
MCE:	6.6
MWW:	55.6

BW
80 lbs.

4

MAPLE LAKE VOLTAGE 0505

September 8, 2020 • ML 0505H • Polled • 1338180

- WHEATLAND PREDATOR 922W
- **WHEATLAND HIGHVOLTAGE122Y**
- WHEATLAND LADY 736 T
- WHEATLAND BULL 680S
- WHEATLAND LADY 752 T
- TNT TOP GUN R244
- WHEATLAND LADY 902J
- SHS ENTICER P1B
- JDF PEPSI 61U
- PVF-BF BF26 BLACK JOKER
- SPRINGCREEK OPAL 12L
- HARVIE JDF WALLBANGER111X
- **MAPLE LAKE CLAIRE 5505C**
- SPRINGCREEK JOSIE 55N

CE:	10.0
BW:	2.8
WW:	74.9
YW:	108.4
MILK:	23.9
MCE:	3.2
MWW:	61.4

BW **WW**
87 lbs. 730 lbs.



This heifer is long and feminine. Bred to our Maple Lake Publicity. He has calving ease and outstanding performance

Bred to Maple Lake Publicity 443B on April 10/22



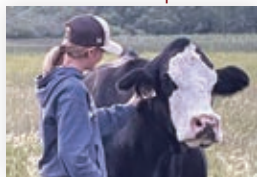
ML PUBLICITY 437B | SERVICE SIRE

Female is from our LER 786T sired dam Maple Lake Ms Oreo 4118. Odds are very good for a baldy calf with the mating to Wheatland Man O War is 5 generations of baldies.

Bred to Wheatland Man O War LER 907G on April 3/22



MAN O WAR LER 907G | SERVICE SIRE



DAM IN PASTURE



ML 4118 | DAM

5

MAPLE LAKE CONNECTED 1118

January 12, 2021 • ML 1118J • Polled • 1346743

CROSSROAD RED STETSON 9E \ HP-HEP IPU MS. CODE RED 249A
 → CROSSROAD CONNECTED 12G \ HP-HOP CC-RC KOP CROSBY 137W
 PERKS BLACKDOLL 1121Y \ HP-HOP CC-RC WFL MISS 21F DOLL 20P
 WHEATLAND BULL 786T WHEATLAND BULL 131L
 → MAPLE LAKE MS OREO 4118 WHEATLAND LADY 351N
 KOP MS TRACKER 118X CG TRACKER 45T
 KOP MS LIKE A ROCK 104U

CE: 8.1
 BW: 2.5
 WW: 84.0
 YW: 126.7
 MILK: 33.8
 MCE: 6.2
 MWW: 75.8

BW
 83 lbs.

6

MAPLE LAKE MS OREO 4118

January 7, 2014 • ML 4118B • Polled • 801796

WHEATLAND BULL 131L
 → WHEATLAND BULL 786T
 WHEATLAND LADY 351N
 CG TRACKER 45T
 → KOP MS TRACKER 118X
 KOP MS LIKE A ROCK 104U

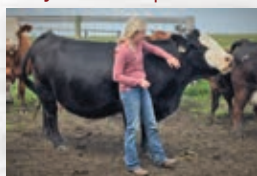
NICHOLS BLK DESTINY D12
 WHEATLAND LADY 908J
 HART JACKPOT J310
 WHEATLAND MISS 917J
 DOUBLE BAR D DRIFTWOOD 83
 CG BLACK GENIE 371N
 MUIRHEAD LIKE A ROCK 1R
 KOP JUSTINE 54L

CE: 10.2
 BW: 1.8
 WW: 81.3
 YW: 127.8
 MILK: 35.4
 MCE: 7.6
 MWW: 76.1

BW
 79 lbs.



WLB JOHN WAYNE | SERVICE SIRE



ML 4118B IN PASTURE

Daughter of our LER 786T sire. She is a top producing cow. She was Bree's 4H calf, super quiet. Exciting mating to our WLB John Wayne sire. Her daughter sells as Lot 5.

Bred to WLB John Wayne 493G on April 26/22





Homo polled Homo black. Dam is our powerful 1/2. blood. A very successful donor. We have 3 full sibs in our herd. Bred to a homo polled & homo black LLW CARD True North G71.

Bred to LLW True North G71 on March 26/22



LLW TRUE NORTH G71 | SERVICE SIRE

7

MAPLE LAKE MAN O WAR 1597

January 12, 2021 • ML 1597J • Polled • 1366947

CCLT ALLIANCE 91C
 → WHEATLAND MAN O' WAR 907G
 WHEATLAND LADY 519C

WHEATLAND BULL 786T
 → MAPLE LAKE 2701
 SIMMENTAL/ANGUS

WS PILGRIM H182U
 BROOKS SHINIA 1A
 YARDLEY LAD A440
 WHEATLAND LADY 321A
 WHEATLAND BULL 131L
 WHEATLAND LADY 351N

CE: 9.4
 BW: 1.6
 WW: 76.8
 YW: 112.2
 MILK: 24.4
 MCE: 3.4
 MWWT: 62.8

BW
 88 lbs.

8

MAPLE LAKE FREEDOM 1997

January 15, 2021 • ML 1997J • Polled • 1352101

BH TRACKER 998J
 → THSF FREEDOM 300N
 SAFN MISS ZING 02H

IPU LIEUTENANT 24E
 → MAPLE LAKE LIEUTENANT 9997
 MAPLE LAKE 5097C

LRS PREFERRED STOCK 370C
 699F
 SAC JET TOP 2D
 SAC MISS ZING 88E
 IPU RED DEPUTY 25C
 IPU MS. HORIZON 21A
 WHEATLAND CIRCUIT BREAKER
 OAKVIEW MISS AGGIE 97A

CE: 7.8
 BW: 3.0
 WW: 81.5
 YW: 122.9
 MILK: 24.2
 MCE: 5.9
 MWWT: 65.0

BW
 82 lbs.



She has some different female maker genetics, Freedom 33N. A heifer from her will be stacked with proven herd building genetics. IPU Roughrider, Lieutenant, Circuit Breaker, & HighVoltage. Grand dam is the dam of ML 0597H Lot 3.

Bred to Roughrider IPU 2T on March 27/22

This female is from one of our 786T donor cows, now owned by LoneStar Simmentals. Bred early to Wheatland Man O War.

**Bred to Wheatland Man O War
LER 907G on March 29/22**



ML HOTTIE 1907 | GRANDDAM



MAPLE LAKE STERLING SILVER | SIRE



9

9

MAPLE LAKE MS STERLING 1061

January 18, 2021 • ML 1061J • Polled • PTG1366898

<p>REMINGTON LOCK N LOAD 54U → MAPLE LAKE STERLING SILVER MAPLE LAKE HOTTIE 1907</p> <p>WHEATLAND SWAGGER 343A \ HP-HOP CC-HOB → MAPLE LAKE 5226 IPU MS. BODYBUILDER 226Z</p>	<p>REMINGTON ON TARGET 2S BAR 15 MISS KNIGHT 78E-51G LFE HOT TOPIC 312W MAPLE LAKE MS BOMBER 9907 WHEATLAND PREDATOR 922W WHEATLAND LADY 721 T MRD MR BODYBUILDER 66S IPU MS BEEF MAKER 111U</p>	<p>CE: 4.5 BW: 4.5 WW: 74.1 YW: 118.3 MILK: 24.0 MCE: 2.0 MMWT: 61.1</p>
---	--	--

BW
103 lbs.

10

MAPLE LAKE CONNECTED 1708

January 9, 2021 • ML 1708J • Polled • 1352082

<p>CROSSROAD RED STETSON 9E \ HP-HOP → CROSSROAD CONNECTED 12G \ HP-HOP CC-RC PERKS BLACK DOLL 1121Y \ HP-HOP CC-RC</p> <p>WHEATLAND SWAGGER 343A \ HP-HOP CC-HOB → MAPLE LAKE SWAGGER 7708 MAPLE LAKE MS BOMBER 1008</p>	<p>SIBELLE SPARTACUS 8A IPU MS. CODE RED 249A KOP CROSBY 137W WFL MISS 21F DOLL 20P WHEATLAND PREDATOR 922W WHEATLAND LADY 721 T WHEATLAND BULL 786T ANGUS/MAPLE LAKE RICHELLE 5099</p>	<p>CE: 10.1 BW: 1.6 WW: 76.8 YW: 113.1 MILK: 27.9 MCE: 6.3 MMWT: 66.3</p>
---	---	---

BW
75 lbs.

Strong pedigree here, from our top end LER 786T and LER 343 Swagger, and her great grand dam was one of our foundation herd building Angus Maple Lake Richelle 5099

**Bred to Wheatland Man O War
LER 907G on March 27/22**



MAN O WAR LER 907G | SERVICE SIRE



10



She is a granddaughter of our best BLCC 345T dam. Outstanding Longevity and a proven producer. She is 15 yo., and still sound.

Bred to Maple Lake KillSwitch 0203 on April 17/22



KILLSWITCH 0203 | SERVICE SIRE

11

MAPLE LAKE BLUE CHIP 1445

January 8, 2021 • ML 1445J • Polled • 1346711

→ SPRINGCREEK LINER 56U
→ SPRINGCREEK BLUE CHIP 9D
SPRINGCREEK TARA 111R

→ WHEATLAND BULL 786T
→ MAPLE LAKE MS BOMBER 4345
BLCC MISS RED 345T

RCC/TCF LINE DRIVE M181
NEVAS L93
MSR KANSAS TANK 235M
SPRINGCREEK BROOKE 38L
WHEATLAND BULL 131L
WHEATLAND LADY 351N
LAZY S BLACK 823P
BLCC MISS JOELLE 77J

CE: 7.7
BW: 3.7
WW: 87.0
YW: 129.3
MILK: 22.3
MCE: 6.6
MWW: 65.8

BW
91 lbs.

12

MAPLE LAKE ROOSEVELT 214

January 12, 2021 • ML 214J • Polled • 1352865

→ CDI AUTHORITY 77X
→ KWA ROOSEVELT 63F
KWA MS ROCK 138Z

→ NUG TRIGGER 263Y
→ RENDEZVOUS MS KENDRA 214E
BLCC MISS PORCHE 290X

NF TRUMP S582
CDI MS CROCKET 88T
KWA RED ROCK 5T
TLR SASHA
IPU 52N ACCELERATOR 222U
MS BGS KENDRA 1P
VIRGINIA'S PORSCHE 64P
BLCC MISS MERIDITH 153M

CE: 3.1
BW: 6.2
WW: 83.9
YW: 124.8
MILK: 31.5
MCE: -0.9
MWW: 73.5

BW
91 lbs.



Very dark red, long bodied female. A good choice to mate to Lieutenant.

Bred to Lieutenant IPU 24E on April 10/22



13

ML 1419

ML 1419 • Polled • UNREGISTERED

REMINGTON LOCK N LOAD 54U
 → **MAPLE LAKE STERLINGSILVER**
 MAPLE LAKE HOTTIE 1907

REMINGTON ON TARGET 2S
 BAR 15 MISS KNIGHT78E-51G
 LFE HOT TOPIC 312W
 MAPLE LAKE MS BOMBER 9907

EPDS
 CE: 4.6
 BW: 4.6
 WW: 74.1
 YW: 118.3
 MILK: 24.0
 MCE: 2.0
 MWWT: 61.1

MVF KUGERAND
 → **MAPLE LAKE BLUE DIAMOND 6459**
 SHORTHORN



ML 1419 AS A CALF

Maple Lake Blue Diamond is the dam of this stand out heifer. She is 16 yo. with a John Wayne blue heifer calf. IN 2022, we have sold many Blue Roan bulls mated to many different sires. We have kept most of her females. This is an opportunity to own a herd builder from our proven outstanding Blue Diamond 6459.

Bred to Muirdale Phantom 10F on April 5/22



ML 4907B STERLING SILVER | SIRE



BLUE DIAMOND 6459 | DAM



ML 4150 | MATERNAL BROTHER



ML HOTTIE 1907 | GRANDDAM



14

A very deep brood cow with proven genetics. LER 786T, our herd builder, is her grand sire. We have bred our Royal Red females to Next Century and are very pleased with the stand out progeny. Buy with confidence the mating will work.

AI Bred to Wheatland Next Century 43H on April 9/22
Exposure Maple Lake Bentley 0521



NEXT CENTURY LER 43H | SERVICE SIRE

14

MAPLE LAKE ROYAL RED 9085

September 12, 2019 • ML 9085G • Polled • 1350410

- LFE BLACK LAKOTA 385W
- NUG ROYAL RED 324A
- TRIPLE C SMARTY PANTS R

- WHEATLAND BULL 786T
- MAPLE LAKE 6085
- SUNNY VALLEY CLASSY 85Z

- R PLUS BLACKEDGE
- KJLI RAZZLE DAZZLE 628R
- TRIPLE C EL PODEROSO REY
- GFI GRAMMS DELIGHT L17

- WHEATLAND BULL 131L
- WHEATLAND LADY 351N
- LFE RS LEWIS 340W
- BLCC MISS 83R

CE:	7.5
BW:	3.3
WW:	75.0
YW:	109.6
MILK:	20.2
MCE:	1.9
MWWT:	57.7

BW
91 lbs.

15

MAPLE LAKE 3209

January 6, 2013 • ML 3209A • Polled • 838622

- 3C WALLY C240 BLK
- LCHMN BODYBUILDER 7303F
- LSF MOMENTO D8

- IPU ROUGHRIDER 2T
- MAPLE LAKE QUORUM 0209
- MAPLE LAKE MS QUORUM 5209

- EMMONS BLACK HERCULES
- 3C CROCUS 9278 BL
- LEACHMAN RED BALDY 438W
- LBR B-248

- WHEATLAND RED TEDDY 457P
- IPU RED POCAHONTAS 52N
- HOOK'S RED QUORUM 55H
- NLM MS KALGERY 207M

CE:	6.6
BW:	2.1
WW:	63.9
YW:	95.5
MILK:	25.5
MCE:	4.7
MWWT:	57.5

BW 87 lbs. **WW** 791 lbs.



15



ML BENTLEY 0521H | SERVICE SIRE



ROYAL RED ML 2209K | PROGENY

This is a successful dam here. She weaned a 865 lb bull calf this year. She is sound, easy keeping, and super quiet. She is an exceptional milker from Bodybuilder.

Bred to Maple Lake Bentley 0521 on May 14/22

Very stout, performance heifer, with great hair coat. She comes from a very strong cow family. MJT Primal Scream progeny have impressive natural meat and muscle.



MJTS PRIMAL SCREAM | SIRE



16

16

MAPLE LAKE SCREAM 2207

January 2, 2022 • ML 2207K • Polled • 1380160

BGS/BM CAPTAIN SCREAM 63D \ HP-HOP
 → MJTS PRIMAL SCREAM 802G \ HP-HOP
 LRX CHEYENNE 14U

WHEATLAND BULL 786T
 → MAPLE LAKE 3207
 MAPLE LAKE MS QUORUM 5209

SVS CAPTAIN MORGAN 11Z
 RF SCREAM 215Z
 TNT TOP GUN R244
 LRX ASHES 102P

WHEATLAND BULL 131L
 WHEATLAND LADY 351N
 HOOK'S RED QUORUM 55H
 NLM MS KALGERY 207M

CE: 11.6
 BW: 0.6
 WW: 69.1
 YW: 104.2
 MILK: 21.5
 MCE: 8.0
 MWW: 56.1

BW 80 lbs. WW 800 lbs.

17

MAPLE LAKE 3207

August 26, 2013 • ML 3207A • Polled • 842854

WHEATLAND BULL 131L
 → WHEATLAND BULL 786T
 WHEATLAND LADY 351N

NICHOLS BLK DESTINY D12
 WHEATLAND LADY 908J
 HART JACKPOT J310
 WHEATLAND MISS 917J
 MV RED LIGHT 406
 HOOK'S APPLAUSE 59F
 BAR 5 KALGERY 402J
 BAR 5 MS MVP 207G

CE: 15.0
 BW: -2.1
 WW: 57.9
 YW: 87.4
 MILK: 21.6
 MCE: 9.5
 MWW: 50.6

BW 81 lbs.

A proven successful LER 786T dam here. She weaned an 800 lb heifer calf ML 2207K. She sells as lot 16.

Bred to Primal Scream MJTS 802J on April 9/22



MJTS PRIMAL SCREAM | SERVICE SIRE



17



18

MAPLE LAKE 7764

January 17, 2017 • ML 7764E • Polled • 1200743

WHEATLAND PREDATOR 922W
 → WHEATLAND HIGHVOLTAGE122Y
 WHEATLAND LADY 736 T

IPU ROUGHRIDER 2T
 → MAPLE LAKE YERA 1764
 ACS MS WYONA 9764W

WHEATLAND BULL 680S
 WHEATLAND LADY 752 T
 TNT TOP GUN R244
 WHEATLAND LADY 902J
 WHEATLAND RED TEDDY 457P
 IPU RED POCAHONTAS 52N
 REMINGTON ON TARGET 2S
 HAAS RANCH G217

CE: 15.0
 BW: -1.4
 WW: 62.1
 YW: 88.1
 MILK: 20.3
 MCE: 7.4
 MMWT: 51.4

BW 71 lbs. WW 720 lbs.

A 5 yo. High Voltage 122y daughter, is long and smooth, with a good udder. Her grand dam is one of our main donor cows. A proven momma.

Bred to WLB John Wayne 493G on May 10/22



WLB JOHN WAYNE | SERVICE SIRE

19

MAPLE LAKE 0808

April 22, 2020 • ML 0808H • Polled • 1338128

ANCHOR D IMAX 250Y
 → SILVER LAKE EMPIRE 8E
 ANCHOR D ADLEY 175C

WHEATLAND HIGHVOLTAGE122Y
 → MAPLE LAKE VOLTAGE 8408
 MAPLE LAKE 5208

HEMR SAMURAI 7S
 DORA LEE ELEXIS
 DOUBLE BAR D INTUITION
 HEMR SONYA 25S
 WHEATLAND PREDATOR 922W
 WHEATLAND LADY 736 T
 WHEATLAND BULL 786T
 MAPLE LAKE MS RIDER 9208

CE: 9.8
 BW: 1.5
 WW: 59.1
 YW: 81.5
 MILK: 32.8
 MCE: 5.3
 MMWT: 62.4

BW 84 lbs. WW 775 lbs.



19

MARC Jenner is the high selling outstanding polled full fleck non-diluter from Silver Lake Farms. She is a MARC Empire 8E daughter. Grand Dam is a LER 786T daughter. An outcross pedigree with a black white face. This is an exciting mating.

Bred to MARC Jenner 9J on April 22/22.



MARC JENNER 9J | SERVICE SIRE

A very attractive, smooth baldy heifer. Great proven maternal genetics on the dam side - LER 786T & Hoc Broker.



20

MAPLE LAKE CONNECTED 2410

December 25, 2021 • ML 2410J • Polled • 1379974

CROSSROAD RED STETSON 9E \ HP-HEP IPU MS. CODE RED 249A
 → **CROSSROAD CONNECTED 12G \ HP-HOP CC-RC** KOP CROSBY 137W
 PERKS BLACK DOLL 1121Y \ HP-HOP CC-RC WFL MISS 21F DOLL 20P
 SIBELLE SPARTACUS 8A
 SVF STEEL FORCE S701
 MR HOC BROKER JM BF H25
 → **MAPLE LAKE BROKER 6410** WHEATLAND BULL 786T
 MAPLE LAKE MS BOMBER 4610 ANGUS/ANGUS

CE: 7.9
 BW: 1.8
 WW: 75.3
 YW: 110.4
 MILK: 25.4
 MCE: 4.1
 MMWF: 63.1

BW 87 lbs. WW 730

21

MAPLE LAKE MS JW 2850

January 7, 2022 • ML 2850K • Polled • 1387625

SFM STOUGHTON 18D NCB COBRA 47Y
 → **WLB JOHN WAYNE 493G \ HP-HOP CC-RC** SFM BS 119B \ HP-HOP
 WLB 52Z TARA 3612D \ HP-HOP CC-RC MRL EL TIGRE 52Z
 JFRS MS 43Y \ HP-HOP
 STARWEST POL BLUEPRINT ANCHOR "T" RUSTY 59G
 → **MAPLE LAKE BLUEPRINT 8150** PHS HOMOZYGOUS XCEPTIONAL
 MAPLE LAKE HOTTIE 1907 LFE HOT TOPIC 312W
 MAPLE LAKE MS BOMBER 9907

CE: 9.4
 BW: 3.4
 WW: 87.7
 YW: 137.6
 MILK: 30.5
 MCE: 4.8
 MMWF: 74.4

BW 88 lbs. WW 765 lbs

The first John Wayne heifer on offer from us. She is long and feminine. Her dam is an embryo. Dam's full sister is ML 8050F - a high selling open \$12,000 Owned by Wilson Stock Farm. The foundation donor ML 1907Y, a Hot Topic, the granddam ML 9907 is a LER 786T daughter.



ML HOTTIE 1907 | MATERNAL GRANDDAM



ML 8050F | FULL SISTER OF DAM





A dark red blaze faced Warden daughter. Her dam is a larger framed LER 872 Headline daughter. Her bull calves have been at the top of our sales the last 2 years. BLCC 345T is also in her pedigree. Backed with confident genetics

22

MAPLE LAKE 2646

01 January 2022 • ML 2646K • Polled • PG1404612

- LFE BS LEWIS 322U
- CROSSROAD WARDEN 36Z
- MADER PLD REDKAT 17N

- WHEATLAND HEADLINE 872U
- MAPLE LAKE 6646D
- MAPLE LAKE 3346

- R PLUS BLACKEDGE
- LFE BS MS ARNOLD 135S
- PELTONS POWERCAT 344G
- ROCKY HILLS KAREN
- WHEATLAND BULL 680S
- WHEATLAND LADY 609 S
- IPU ROUGHRIDER 2T
- BLCC MISS RED 345T

CE:	5.9
BW:	4.2
VW:	77.3
YW:	112.9
MILK:	15.6
MCE:	0.6
MWW:	54.3

BW	VW
91 lbs.	765 lbs

23

MAPLE LAKE MS SCREAM 2597

February 8, 2022 • ML 2597K • Polled • 1388909

- BGS/BM CAPTAIN SCREAM 63D \ HP-HOP
- MJTS PRIMAL SCREAM 802G \ HP-HOP
- LRX CHEYENNE 14U

- WHEATLAND CIRCUIT BREAKER
- MAPLE LAKE 5097C
- OAKVIEW MISS AGGIE 97A

- SVS CAPTAIN MORGAN 11Z
- RF SCREAM 215Z
- TNT TOP GUN R244
- LRX ASHES 102P
- WHEATLAND HIGHVOLTAGE122Y
- WHEATLAND LADY 81X
- ERIXON TOP SHELF 77Y
- OAKVIEW MISS WHISPER 98W

CE:	6.2
BW:	4.7
VW:	80.3
YW:	119.4
MILK:	24.0
MCE:	5.2
MWW:	64.2

BW	VW
99 lbs.	710 lbs



A very thick heifer. She has lots of top and hip. A maternal sister sells as Lot 3 and Lot 8 has very similar ancestry. Genetics we are proud to offer to you.



MJTS PRIMAL SCREAM | SIRE

A MJT Primal Scream heifer with natural big muscling, and easy keeping. Her dam is a quiet, easy keeper, with a great udder.



MS KNIGHT 385D | DAM



24

MAPLE LAKE SCREAM 387

January 29, 2022 • ML 387K • Polled • 1404609

BGS/BM CAPTAIN SCREAM 63D \ HP-HOP
 → MJTS PRIMAL SCREAM 802G \ HP-HOP
 LRX CHEYENNE 14U

SVS CAPTAIN MORGAN 11Z
 RF SCREAM 215Z
 TNT TOP GUN R244
 LRX ASHES 102P

CE: 9.3
 BW: 3.6
 WW: 73.4
 YW: 113.3
 MILK: 27.5
 MCE: 6.6
 MMWT: 64.2

SKORS RED KNIGHT 164A
 → RENDEZVOUS MS KNIGHT 385D
 RENDEZVOUS MS SNUGGY 228B

ACS RED KNIGHT 715T
 SKORS MS DANCER 198Y
 NUG SMUGGLER 296Y
 RENDEZVOUS 434U

BW 97 lbs.
 WW 705 lbs

25

MAPLE LAKE HI CALIBRE 1035

January 6, 2021 • MLSF 1035J • Female • 2215604

EXAR CLASSEN 1422B
 → MICH WHEATLAND HICALIBER 7197E
 EXAR HIGHROSE 84026

DAMERON FIRST CLASS
 EXAR PRINCESS 2006
 EXAR PIT BOSS 409
 CURTIS HIGHROSE 807
 CONNEALY CONSENSUS 7229
 WILBAR RUBY 955N
 REMITALL F JET 30X
 HENDERSON LAVENDER LADY 18W

CE: 2.0
 BW: 3.4
 WW: 49.0
 YW: 84.0
 MILK: 16.0
 MCE: 9.0

BW 87 lbs.

A moderate angus heifer, easy keeper, good maternal genes. Carrying an exciting calf from Chestnut Turning Heads IMP 29G.

Bred to Chestnut Turning Heads on March 24/22



HIGH CALIBRE 7197E | SIRE



CHESTNUT TURNING HEADS | SIRE



25



Great grand dam is our foundation angus donor Maple Lake Richelle 5099 and Final Answer in her pedigree. On the sire aide ML 7032E comes from our Red Angus donor family MSLF 3032A

Bred to Chestnut Turning Heads on March 24/22

26 MAPLE LAKE MS NETWORTH 1699

January 8, 2021 • MLSF 1699J • Female • 2235112

- S A V NET WORTH 4200
- **MAPLE LAKE NET WORTH 7032**
RED MAPLE LAKE 3032A
- MAPLE LAKE FINAL ANSWER 4031B
- **MAPLE LAKE 6999**
MAPLE LAKE REALLY WINDY 9999W

- S A V 8180 TRAVELER 004
- S A V MAY 2410
- RED SIX MILE WIN-CHESTER 745W
- RED D-BAR LAMBDA 32U
- S A V FINAL ANSWER 0035
- PRAIRIELANE 7451 ESTELLE 2031
- A A R REALLY WINDY 1205
- MAPLE LAKE RICHELLE 5099R

CE:	4.0
BW:	2.3
WW:	47.0
YW:	84.0
MILK:	19.0
MCE:	8.0

BW
87 lbs.

27 MAPLE LAKE DENSITY MOTIVE 0110

October 10, 2020 • MLSF 0110H • Female • 2181067

- S A V 004 DENSITY 4336
- **MAPLE LAKE DENSITY 4041B**
MAPLE LAKE 2041Z
- SOO LINE MOTIVE 9016
- **MAPLE LAKE MOTIVE 4110B**
MAPLE LAKE REALLY WINDY 9999W

- S A V 8180 TRAVELER 004
- S A V MAY 7238
- S A V PIONEER 7301
- MAPLE LAKE RICHELLE 5099R
- HF KODIAK 5R
- TLA BEAUTY 5R
- A A R REALLY WINDY 1205
- MAPLE LAKE RICHELLE 5099R

CE:	6.0
BW:	2.0
WW:	35.0
YW:	69.0
MILK:	18.0
MCE:	3.0

BW
78 lbs.



This female is loaded with desirable maternal genetics-Motive,Density,and our foundation donor Maple Lake Richelle 5099. We have used this donor extensively in our Simmental 1/2 blood breeding program with great success.

Bred to Six Mile Fort Knox 27F on April 14/22



A High Calibre female that is smooth and feminine. Bred to Chest Nut Turning Heads IMP 29G, a calving ease sire with extra style and performance.

Bred to Chestnut Turning Heads on March 24/22



CHESTNUT TURNING HEADS | SERVICE SIRE

28

MAPLE LAKE HI CALIBRE 1093

January 6, 2021 • MLSF 1093J • Female • 2215605

EXAR CLASSEN 1422B
 → MICH WHEATLAND HICALIBER 7197E
 EXAR HIGHROSE 84026

KEMP BROTHERS BRILLIANCE 30A
 → KEMP BROTHERS FREEDOM 93D
 KBF MISS FREEDOM 5T

DAMERON FIRST CLASS
 EXAR PRINCESS 2006
 EXAR PIT BOSS 409
 CURTIS HIGHROSE 807
 S A V BRILLIANCE 8077
 KEMP BRO'S MS BLACKCAP JUDY12Y
 TC FREEDOM 104
 STALBURN ZARA 64P

CE:	3.0
BW:	3.4
WW:	49.0
YW:	88.0
MILK:	22.0
MCE:	9.0

BW
88 lbs.

29

RED MAPLE LAKE 1526J

January 18, 2021 • MLSF 1526J • Female • 2240174

RED SOO LINE POWER EYE 161X
 → RED DOUBLE B BULLSEYE 1B
 RED BLAIRS PRICILLA 44Z

RED SIX MILE WIN-CHESTER
 → RED MAPLE LAKE 3032A
 RED D-BAR LAMBDA 32U

RED COCKBURN RIBEYE 308U
 RED TR LYNN 301R
 RED RINGSTEAD KARGO 215U
 RED BRYLOR PRISCILLA 67W
 RED TOWAW INDEED 104H
 RED SIX MILE SHAWNEE 116T
 RED LAZY MC SMASH
 RED KORAN LAMBDA 127L

CE:	-3.5
BW:	3.3
WW:	48
YW:	78
MILK:	25
MCE:	0.5

BW
78 lbs.

WW
675 lbs.



MLSF 3032A | PROGENY



RED MRLA RESPECT 42G | SERVICE SIRE

A moderate framed heifer from our proven donor MLSF 3032A. A Maternal sister sell as Lot 26. Bred to MRLA Respect, a proven calving ease, performance bull.

Bred to Red MRLA Respect 42G on April 7/22



THANK YOU TO ALL BUYERS AND BIDDERS.

Satisfied customers are our goal.

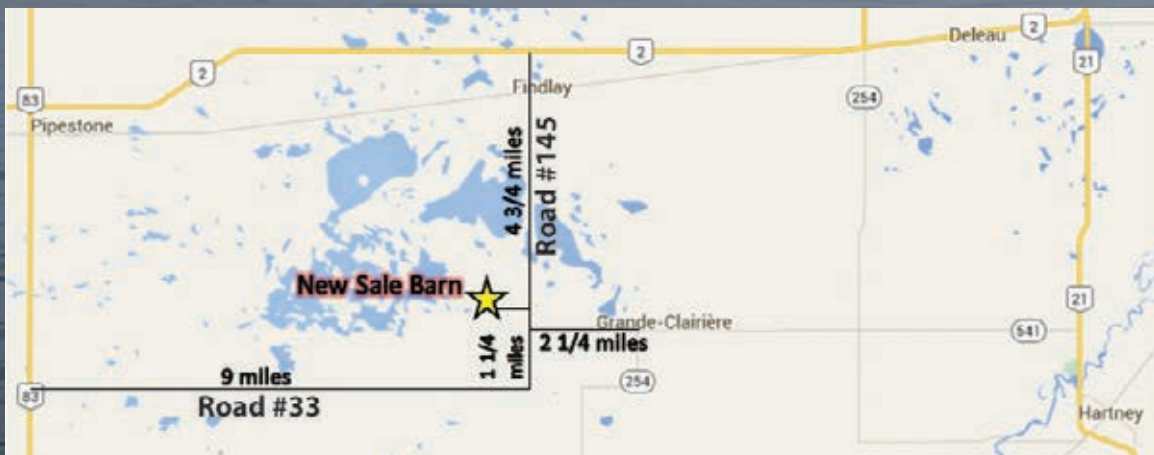


At the end of the day,
What really matters is
your Loved ones are well,
you've done your best
and you're Thankful
for All you have



**Return Undeliverable
Canadian Addresses To:**

**T Bar C Cattle Co. Ltd.
Box 2330
Warman, SK S0K 4S0**



DIRECTIONS TO THE FARM:

From Hwy #2
4³/₄ miles south on
Road 145W (Findlay Road),
turn west up the lane.

From Hwy #83
9 miles east on Grande-
Clairière Road, turn north
1¹/₄ miles to lane on west.

From Hwy #21
2 miles west of
Grande-Clairière ¼ mile north,
west up the lane.



Created by

*Today's
Publishing*